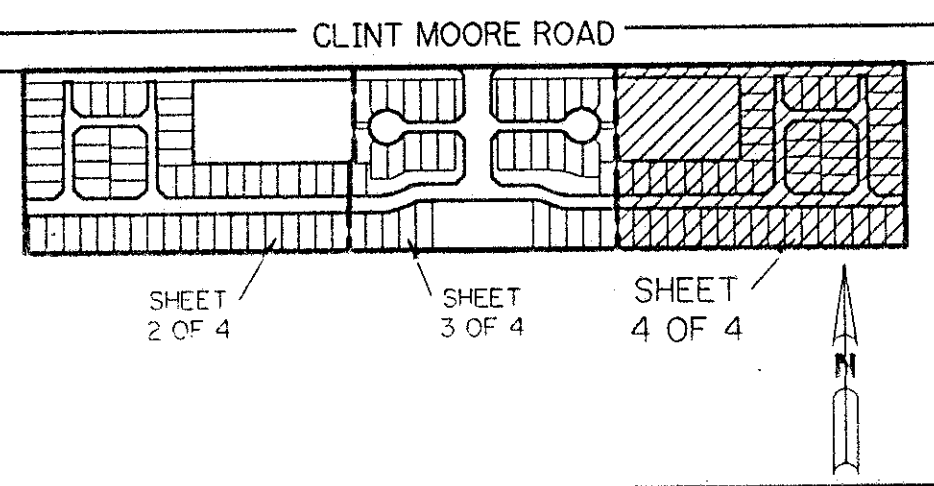


A PLANNED UNIT DEVELOPMENT

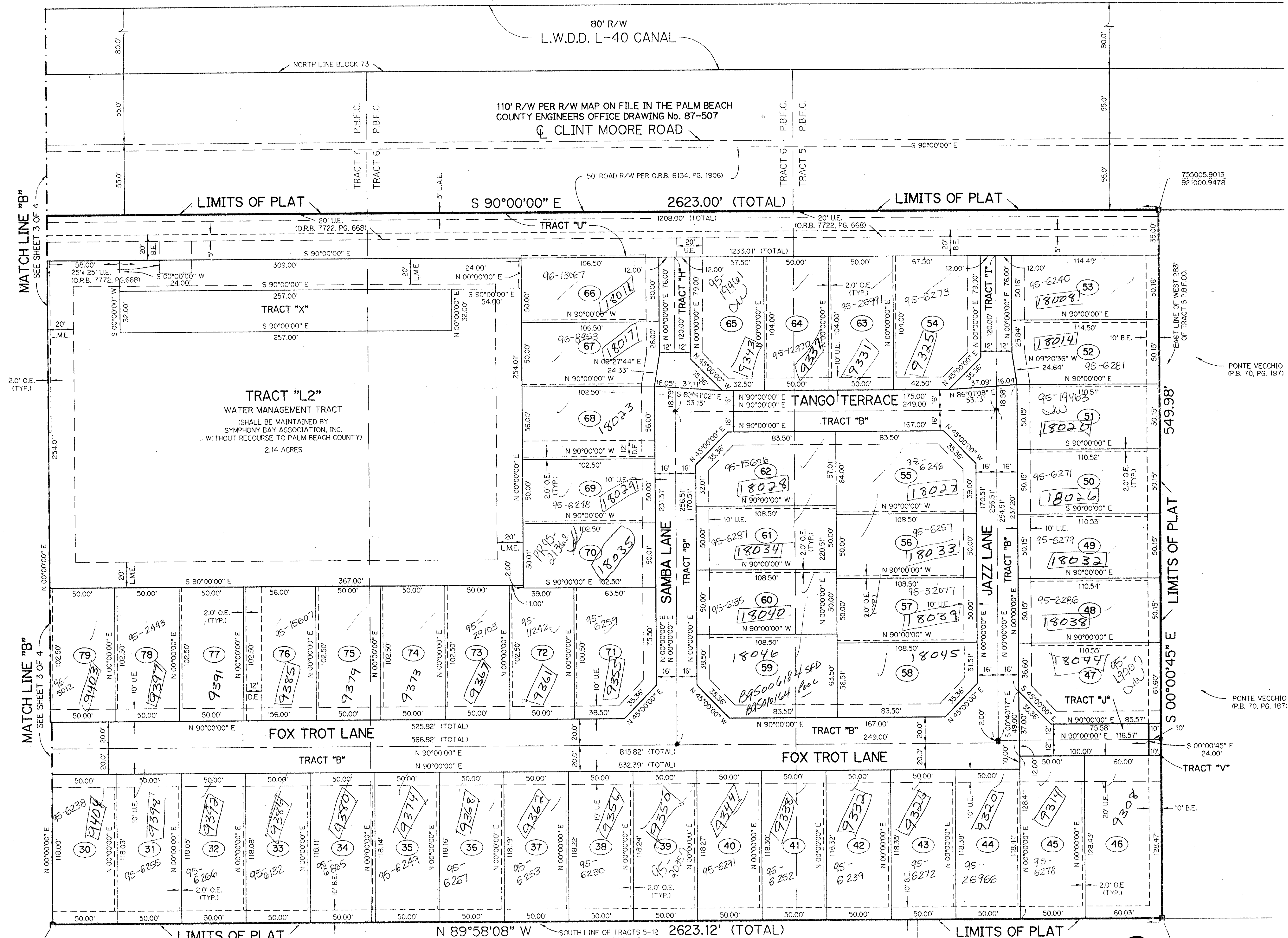
SYMPHONY BAY

BEING A REPLAT OF A PORTION OF TRACTS 5, 6, 7, 8, 9, 10, 11, AND 12 AND ASSOCIATED RIGHT-OF-WAY ALL IN BLOCK 73 ACCORDING TO THE PLAT OF PALM BEACH FARMS COMPANY PLAT NO. 3, AS RECORDED IN PLAT BOOK 2, PAGE 45, PUBLIC RECORDS OF PALM BEACH COUNTY, FLORIDA. LYING IN SECTION 6, TOWNSHIP 47 SOUTH, RANGE 42 EAST

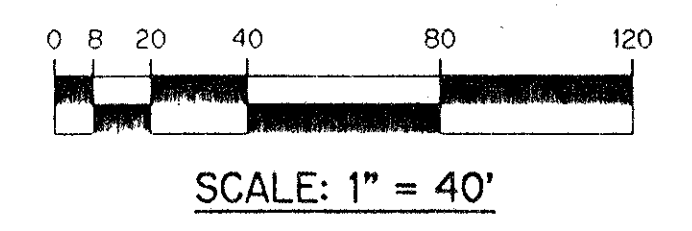
SHEET 4 OF 4 JANUARY, 1995



KEY MAP
N.T.S.



PET. 94-98
5/3/3/M



SCALE: 1" = 40'

NOTE:
COORDINATES SHOWN ARE GRID COORDINATES
DATUM = 1983 NORTH AMERICAN DATUM (1990 ADJUSTMENT)
ZONE = FLORIDA EAST ZONE
LINEAR UNIT = US SURVEY FEET
COORDINATE SYSTEM = 1983 STATE PLANE, TRANSVERSE MERCATOR PROJECTION
ALL DISTANCES SHOWN ARE GROUND DISTANCES UNLESS OTHERWISE NOTED
SCALE FACTOR = 1.0000207
GRID DISTANCE = (GROUND DISTANCE) x (SCALE FACTOR)
BEARING ROTATION (PLAT TO GRID) = -00°28'45"
EXAMPLE: S 90°00'00" E (PLAT BEARING) = N 89°31'15" E (GRID BEARING)

- LEGEND:
- - PERMANENT REFERENCE MONUMENT, PLS #4213
 - - PERMANENT CONTROL POINT, PLS #4213
 - △ - DELTA ANGLE
 - A - ARC LENGTH
 - B.E. - BUFFER EASEMENT
 - D.E. - DRAINAGE EASEMENT
 - L.M.A.E. - LAKE MAINTENANCE ACCESS EASEMENT
 - L.M.E. - LAKE MAINTENANCE EASEMENT
 - L.W.D. - LAKE WORTH DRAINAGE DISTRICT
 - N.R. - NOT RADIAL
 - N.T.S. - NOT TO SCALE
 - O.E. - OVERHANG EASEMENT
 - O.R.B. - OFFICIAL RECORD BOOK
 - P.B. - PLAT BOOK
 - P.B.F.C. - BLOCK 73, PALM BEACH FARMS CO. PLAT NO. 3 (PLAT BOOK 2, PAGE 45)
 - PGS. - PAGES
 - P.L.S. - PROFESSIONAL LAND SURVEYOR
 - R - RADIUS
 - R/W - RIGHT-OF-WAY
 - U.E. - UTILITY EASEMENT

THIS INSTRUMENT PREPARED BY
PERRY C. WHITE P.L.S. 4213 STATE OF FLORIDA
LAWSON, NOBLE AND ASSOCIATES, INC.
ENGINEERS PLANNERS SURVEYORS
WEST PALM BEACH, FLORIDA

0642-001

74/169

TAZ-769

SUBDIVISION - Symphony Bay
BOOK 74 PAGE 169
FLOOD MAP # 2ISA
QUAD # 53 ZONING PUD
SE 94-48 ZIP CODE 33496
PUD NAME Same
164742

Symphony Bay